

# WELCOME TO BURKE HIGH SCHOOL

## CLASS OF 2023

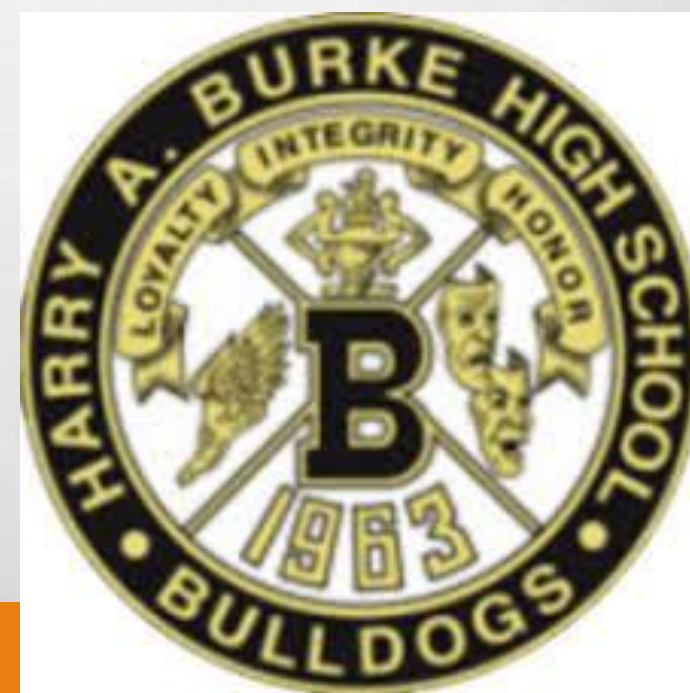
FRESHMEN PARENT NIGHT

AUGUST 12, 2019





**LOYALTY  
INTEGRITY  
HONOR**



# PREPARING FOR GRADUATION BEGINS NOW

**The journey to 49 credits begins today.**

**You have 64 chances to earn 49 credits over the next 4 years.**

# WHAT DOES THE SCHEDULE LOOK LIKE?

## ODD DAY (4 CLASSES)

- BLOCKS
  - **1**
  - ADVISEMENT
  - **3**
  - **5**
  - **7**

## EVEN DAY (4 CLASSES)

- BLOCKS
  - **2**
  - ADVISEMENT
  - **4**
  - **6**
  - **8**



# ATTENDANCE MATTERS

- NUMBER OF TARDIES
- NUMBER OF ABSENCES
- **RESEARCH SHOWS THAT MISSING TEN PERCENT OF THE SCHOOL YEAR, OR ABOUT 18 DAYS IN MOST SCHOOL DISTRICTS, NEGATIVELY AFFECTS A STUDENT'S ACADEMIC PERFORMANCE. THAT'S JUST TWO DAYS A MONTH AND THAT'S KNOWN AS CHRONIC ABSENCE. THE ACADEMIC IMPACT OF MISSING THAT MUCH SCHOOL IS THE SAME WHETHER THE ABSENCES ARE EXCUSED OR UNEXCUSED. (ATTENDANCEWORKS.ORG)**
- STRIVE FOR 95



**1 or 2 days a week doesn't seem like much but...**

If your child misses...	That equals...	Which is...	And over 13 years of schooling that's...
1 day every 2 weeks	20 days per year	4 weeks per year	Nearly 1 ½ years
1 day per week	40 days per year	8 weeks per year	Over 2 ½ years of school
2 days per week	80 days per year	16 weeks per year	Over 5 years
3 days per week	120 days per year	24 weeks per year	Nearly 8 years

**How about 10 minutes late a day? Surely that won't affect my child?**

He/she is only missing just...	That equals...	Which is...	And over 13 years of schooling that's...
10 mins per day	50 mins per week	Nearly 1 ½ weeks per year	Nearly ½ year
20 mins per day	1 hr. 40 mins per week	Over 2 ½ weeks per year	Nearly 1 year
30 mins per day	Half a day per week	4 weeks per year	Nearly 1 ½ years
1 hour per day	1 day per week	8 weeks per year	Over 2 ½ years

**EVERY DAY COUNTS**

**If you want your child to be successful at school then, YES, attendance does matter!**

<b>Minutes late per day</b>	<b>Learning time lost in a year</b>
5 minutes	3½ days
10 minutes	7 days
15 minutes	10 ½ days
20 minutes	14 days
30 minutes	21 days



**ATTENDANCE— 402-557-3230  
402-557-3231**

CALL ATTENDANCE FOR THE FOLLOWING:

- STUDENT LEAVING EARLY (NO PASSES CAN BE DELIVERED THE FIRST 15 MINUTES OR LAST 15 MINUTES OF A BLOCK)
- STUDENT IS ILL
- YOU GET A ROBO CALL STATING YOUR CHILD IS ABSENT
- CALL A DAY AHEAD FOR A PLANNED APPOINTMENT

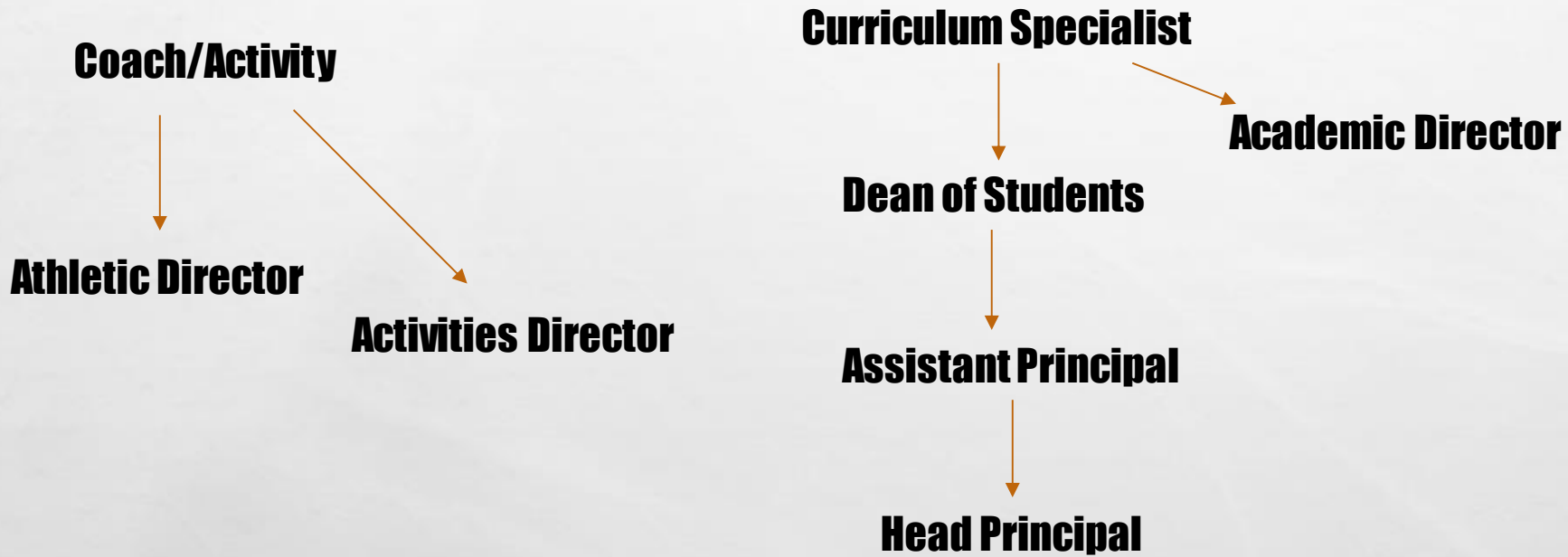


WHO DO I TALK TO?

**Start at the top**

**Teacher**

**Counselor**





# BURKE HIGH SCHOOL

## HOME OF THE BULLDOGS



12200 Burke Blvd • Omaha, NE 68154 • 402-557-3200

Look under staff to find email addresses and phone numbers

<https://burke.ops.org/>

# SOCIAL MEDIA

- CAN BE AN ASSET IF USED CORRECTLY
- ASK YOURSELF: IS IT TRUTHFUL? IS IT HELPFUL? IS IT RELEVANT?
- WHAT YOU POST BECOMES YOUR DIGITAL RESUME. ARE YOU WORTH HIRING?
- PHONES- DO NOT LET THEM BE A DISTRACTION FROM YOUR EDUCATION

“And I’ll tell you this right now — if there’s anything negative about women, if there’s anything racial or about sexuality, if there’s anything about guns or anything like that, we’re just not going to recruit you, period. Piece of advice for you — what you put on social media, that’s your résumé to the world. That’s what you’re trying to tell the world you’re all about. That’s how you’re advertising yourself. Be smart with that stuff.”

Quote by Scott Frost- Nebraska Head Football coach



# WHERE DO I GO BEFORE SCHOOL?

- CAFETERIA
- LIBRARY
- EAT BREAKFAST
- BUILDING OPENS AT 7AM UNLESS WITH A SUPERVISED ACTIVITY.



# WHERE DOES MY STUDENT GO AFTER SCHOOL?

- HOME
- TUTORING 3:15-5:00 (TUESDAY AND THURSDAY)
- TWA 3:15-5:15 (TRANSPORTATION WAITING AREA)
- WITH A COACH/SPONSOR/TEACHER
- SCHOOL IS OUT AT 3:05. PLEASE MAKE SURE TO HAVE ARRANGEMENTS FOR RIDES HOME

# COMPETITION

- MANY PROGRAMS/TEAMS ARE VERY COMPETITIVE THAT REQUIRE TRYOUTS
- EVERYONE DOES NOT ALWAYS MAKE THE TEAM
- MAINTAIN A GOOD WORK ETHIC, GRADES, AND POSITIVE RELATIONSHIPS

# BEING SUCCESSFUL

- BE THERE AND ON TIME EVERY DAY
- TURN IN WORK ON TIME
- BE ORGANIZED
- ASK QUESTIONS
- TUTORING
- GET INVOLVED IN HIGH SCHOOL
- COMMUNICATION



# WHAT DOES MY STUDENT NEED TO BRING ON THE FIRST DAY?

- PEN OR PENCIL
- NOTEBOOK
- BACKPACK – BOOKS MIGHT BE HANDED OUT
- TEACHERS WITH SPECIFIC SUPPLIES WILL GIVE THAT INFORMATION DURING THE FIRST DAYS OF CLASS

# DOES BURKE HAVE OPEN CAMPUS FOR LUNCH?

- NO
- NO OUTSIDE FOOD IS ALLOWED IN THE CAFETERIA

# CHECKING GRADES

- SIGN UP FOR ACCESS TO INFINITE CAMPUS TO MONITOR GRADES AND ATTENDANCE

# COUNSELING TEAM

- **PHONE PREFIX FOR ALL 402-557-**

- MR. DON FERREE ----- N, T, U, V, W EXT. 3222
- MRS. LALIA HART ----- B, E, P EXT. 3224
- MS. MICAELA MORIARTY ----- J, K, R EXT. 3228
- MRS. NADINE REYES ----- C, G, Y EXT. 3226
- MRS. SUSAN RICHARDS ----- D, I, S, Z EXT. 3223
- MRS. KIM SCHUMACHER ----- M, O, Q EXT. 3221
- MRS. HOPE SMEJKAL (DIRECTOR) ----- A, F, X EXT. 3220
- MRS. ASHLEIGH WEAVER ----- H, L EXT. 3225



# OTHER SUPPORTS



## **School Social Worker**

**Anne Beacom**

**[Anne.beacom@ops.org](mailto:Anne.beacom@ops.org)**

**402-557-3208**



## **Community Counselor**

**Shelly Taylor**

**[Shelly.taylor@nmhs.org](mailto:Shelly.taylor@nmhs.org)**

**402-557-3285 (located at Burke 4 days per week  
and St. Luke church 1 day)**

# SUPPORTS

## TEEN CENTER

- ST. LUKE'S CHURCH PARTNERSHIP (10 YEARS)
- ACADEMIC ASSISTANCE, POST-SECONDARY PREPAREDNESS, HEALTH & WELLNESS, STUDENT/FAMILY SUPPORT SERVICES

## UPWARD BOUND

- KEVIN BAILEY ([KEVIN.BAILEY@METHODISTCOLLEGE.EDU](mailto:KEVIN.BAILEY@METHODISTCOLLEGE.EDU)) 402-354-6523
  - (1) LOW-INCOME (FREE/REDUCED LUNCH), OR (2) FIRST-GENERATION TO GO TO COLLEGE
- STRONG DESIRE TO GO TO COLLEGE WITH ACADEMIC EVIDENCE TO BACK UP THEIR POTENTIAL
- RESILIENT AND DEMONSTRATES A POSITIVE, CAN-DO ATTITUDE TOWARD THEIR GOALS

# SCHOOL COUNSELING



School counselors prepare students to excel in college, career and life by instilling hope, increasing school connectedness, and empowering students to achieve academic success.



Curriculum/Small Groups



Individual Student Planning



Responsive Services

School Counseling  
goals for Freshmen

Transition to high  
school & stay on  
track with credits

Understanding how  
to handle conflict in  
school

Have information  
about clubs,  
activities, and sports

Know their  
counselor/how to  
access their  
counselor

Articulate a  
proposed career  
path and complete  
the career interest  
profile

Complete their 4  
year course planner

Know how to  
access their school  
email account

# COUNSELING



# NAVIANCE

- WHAT IS NAVIANCE?
  - COLLEGE AND CAREER READINESS SOLUTION
  - HELPS ALIGN STUDENT STRENGTHS/INTERESTS TO POST-SECONDARY GOALS
  - CONNECTING LEARNING TO LIFE
  - 9<sup>TH</sup> GRADERS COMPLETE THEIR CAREER PROFILE SURVEY

# SPORTS AFTER HIGH SCHOOL



**NSAA (Nebraska School Activities Association)**

[www.nsaahome.org](http://www.nsaahome.org)

**Eligibility for sports/activities**



**NCAA (National College Athletic Association)**

[www.ncaa.com](http://www.ncaa.com)

**Eligibility for collegiate athletes**



**9<sup>th</sup> grade = 14 credits minimum to earn  
by end of 9<sup>th</sup> grade**



**10<sup>th</sup> grade = 28 credits minimum to earn  
by end of 10<sup>th</sup> grade**



**11<sup>th</sup> grade = 42 credits minimum to earn  
by end of 11<sup>th</sup> grade**



**12<sup>th</sup> grade = 49 credits minimum needed  
to graduate**

**ON TRACK  
INDICATORS**